



Core Lifters are used to break off the core sample at the end of a coring run and then to retain the sample within the core barrel to the surface.

They are used together with a Core Lifer Case and are available in several different types to suit ground conditions.

Made from steel and carefully hardened for durability and spring response, their robust construction includes Individually brass riveted springs.

Applications

- Rotary Coring

Features

- Made in the UK
- Meets the requirements of EN ISO 22475-1: 2006
- Available to suit all popular rotary barrel sizes including Geobor S
- Available with short or long basket fingers
- Varying number of finer springs
- Hard and stiff fingers to suit core condition
- Set to coreline
- Set to standard size (without coreline) are available upon request



See over for information on the various options available

Core Lifters



Serrated & Internal Slotted

Competent rock core, sharp serrations to grab and grip core, hardened for durability and lasting spring effect.



Internal slotted with 9 short basket fingers

9 short finger spring retain fractured core.



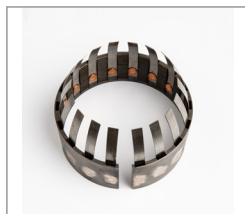
Internal slotted with 18 short basket fingers **BESTSELLER**

18 short finger springs our most popular seller for reliable recovery of highly fractured rock. core including coal measure mudstones, sandstones, limestone and coal.



Internal slotted with 9 long basket fingers

9 long finger spring provides a greater retaining effort on the fractured core



Internal slotted with 18 long basket fingers

18 long finger spring acts like a basket to retain a variable highly fractured core with the multi long fingers retaining and supporting the core as it is lifted out of the borehole.

Core Lifter Case



Positioned on the leading edge of the inner rotary barrel assembly, it has a sharp leading edge to receive the core. An internal taper allows the core to pass when drilling and once the barrel is pulled back, traps the spring tight around the base of the core, snapping and retaining it.

Core Keeper



Instead of having a separate core lifter case and core lifter the Core Keeper™ has internally mounted, multi-hinged tabs within the core lifter case meaning no more struggling with fitting or extracting separate core lifters.