

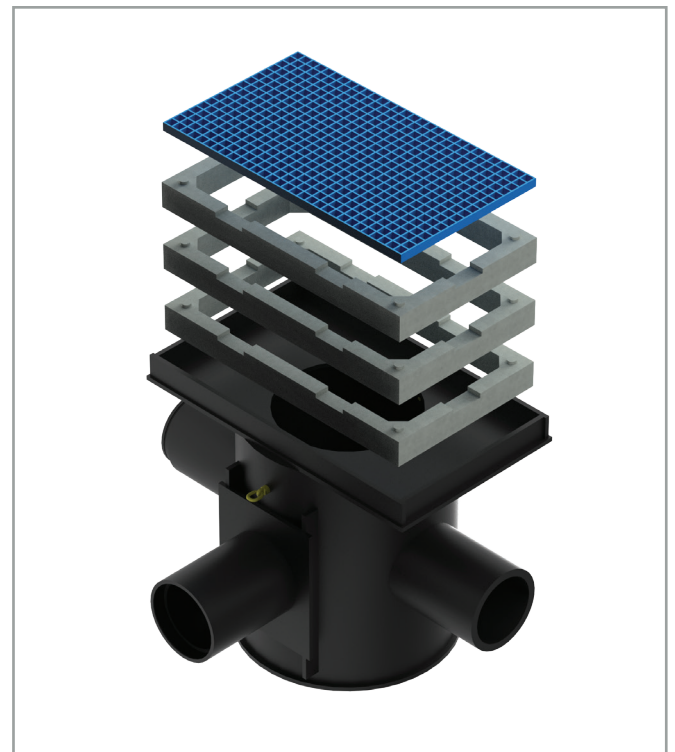
APK and ASC Circular Catchpit

Both the APK/ASC Catchpits are manufactured using solid wall HDPE pipe and are especially suited to on track drainage installations in the 6ft / cess zones.

The ASC Catchpit provides the flexibility of a circular catchpit while allowing rectangular concrete sections to be used near the surface.

The catchpit is manufactured individually to customer requirements allowing the catchpit to be configured to meet site specifications.

The solid wall design gives the catchpit excellent strength. Testing conducted by a UKAS approved laboratory showed lateral loading of 60kPa produced maximum deflection < 1%. Further tests to failure showed lateral loads > 200kPa and vertical loads > 1000kPa.

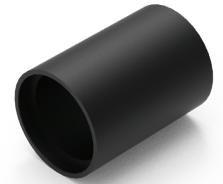


Key Features & Benefits

- Extreme Strength: Solid-walled design providing ring stiffness up to 128kPa
- Certified Resilience: UKAS destruction-tested to 15 times typical TSZ structural requirements
- 60+ Year Asset Life: Manufactured from premium HDPE for long-term durability
- Adjustable Inlets: Built-in adjustment matches level invert requirements, eliminating the need for extra stone guards
- Efficient Installation: Features Demco's Flush Pushfit pipe joints for fast, seamless on-site assembly
- Flexible Configurations: Available in 500mm–1000mm sizes with customisable top sections to suit any project

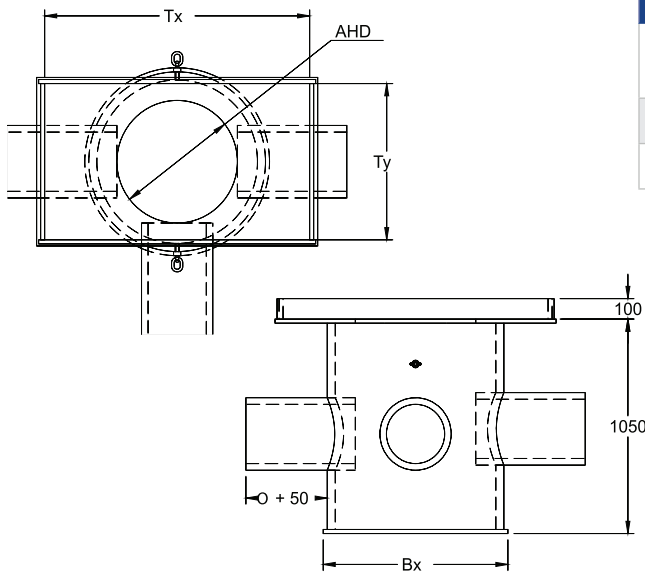
APK Catchpit Series

APK SERIES	ID (mm)	OD (mm)	MAX Height (mm)	MAX Diameter Inlet/ Outlet (mm)	MAX Diameter Inlet/ Outlet @ 90° (mm)	Pipe Stiffness (kN/m ²)	Base Bx (mm)	Base By (mm)	Base Bt (mm)
APK CP500	500	580	3000	450	225	128	620 - 2000	620 - 2000	20 - 40
APK CP600	600	680	3000	500	315	74	720 - 2000	720 - 2000	20 - 40
APK CP700	700	780	3000	560	355	46	820 - 2000	820 - 2000	20 - 40
APK CP800	800	880	3000	630	355	31	920 - 2000	920 - 2000	20 - 40



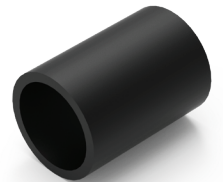
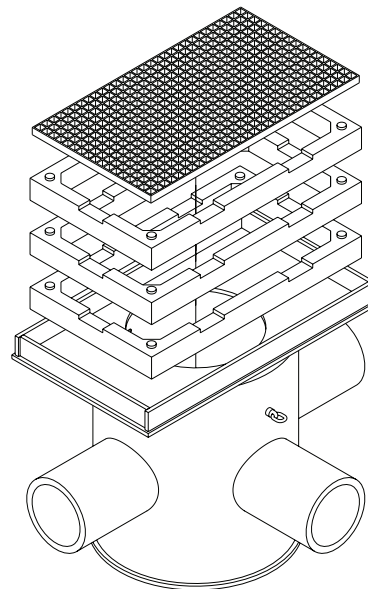
APK Catchpit Series

ASC SERIES	ID (mm)	OD (mm)	Access Hole Diameter AHD (mm)	MAX Diameter Inlet/ Outlet (mm)	MAX Diameter Inlet/ Outlet @ 90° (mm)	Pipe Stiffness (kN/m ²)	Base Bx (mm)	Base By (mm)	Base Bt (mm)
ASC CP500	500	580	500	450	225	128	620 - 2000	620 - 2000	20 - 40
ASC CP600	600	680	600	500	315	74	720 - 2000	720 - 2000	20 - 40
ASC CP700	700	780	600	560	355	46	820 - 2000	820 - 2000	20 - 40
ASC CP800	800	880	600	630	355	31	920 - 2000	920 - 2000	20 - 40

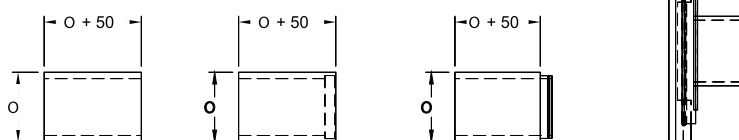


Top Concrete Section

Type	Top Tx (mm)	Top Ty (mm)	Section Size (mm) L x W x H
Standard	1300	765	1035 x 575 x 115
Matisa	1065	605	1270 x 735 x 115



SPIGOT OPTIONS



Option 1 - Plain Pipe Option 2 - DEMCO FPO (F) Option 3 - DEMCO FPO (M) Option 4 - Adjustable

Spigot Notes:

- Option 5 - Plain hole (Not shown above)
- SP1 - Standard length of spigot external of chamber is spigot diameter + 50mm
- SP2 - Option 4, adjustable spigot can be used in combination with 1, 2, 3, 4.
- SP3 - Option 4 standard adjustment ±100mm. Chamber height may reduce adjustment
- SP4 - Custom dimensions available on request.



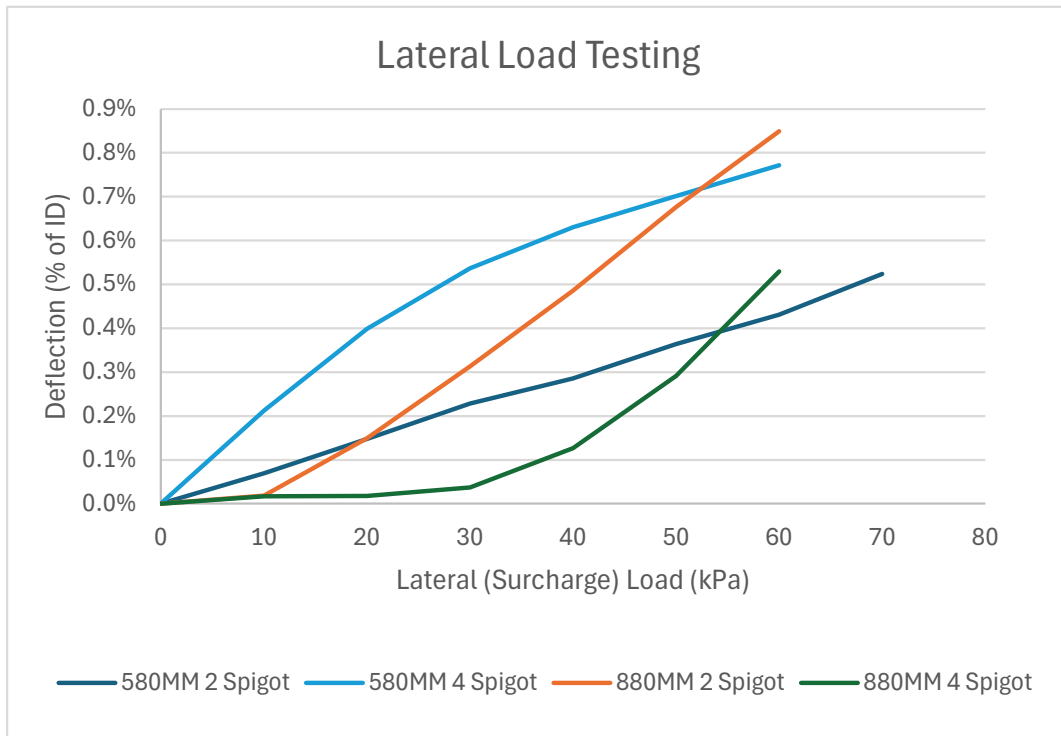


Figure 1—Lateral load testing of catchpit conducted with 200mm of compacted gravel

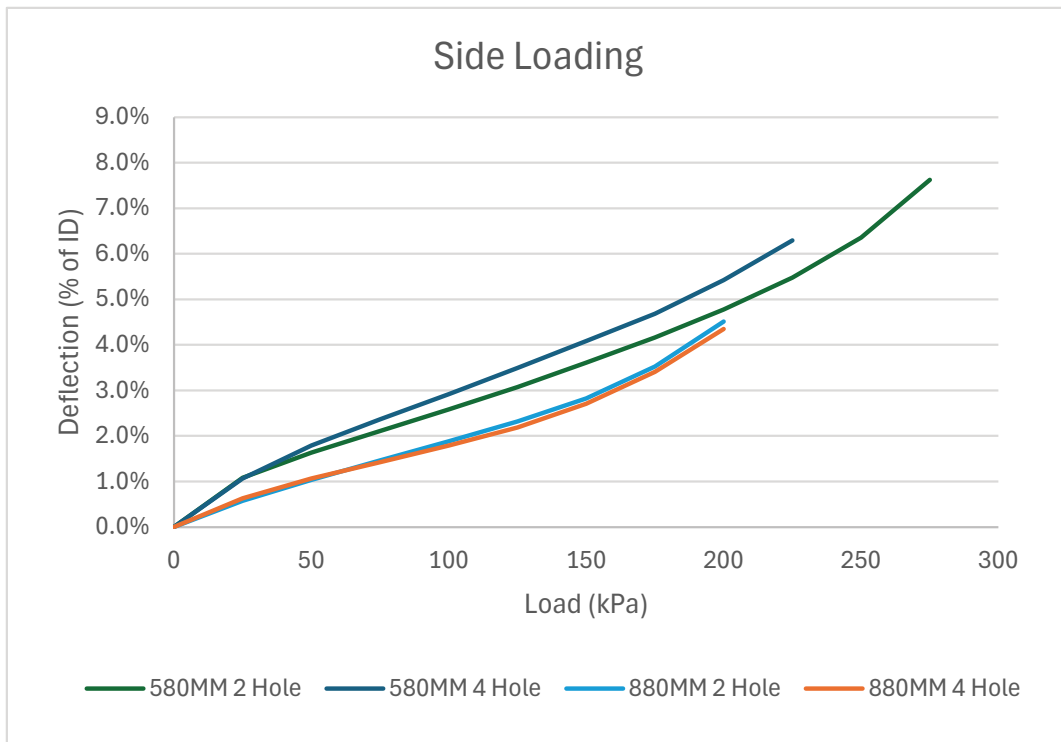


Figure 2—Side load testing to failure of catchpit with no surround or spigots

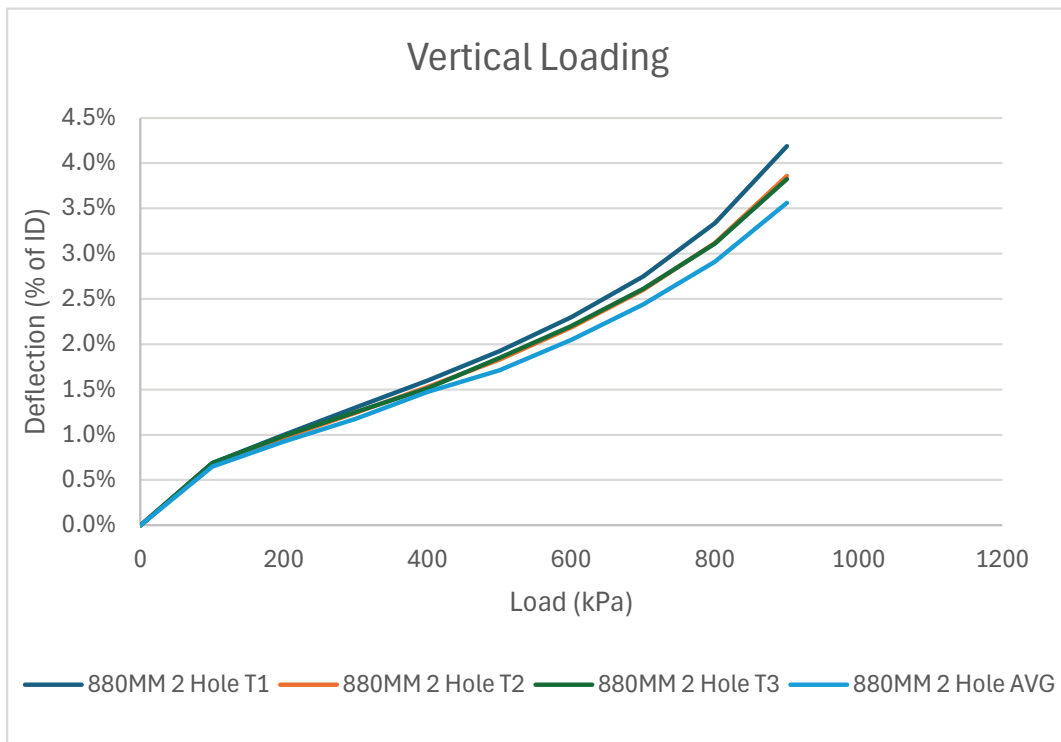


Figure 3—Vertical load testing to failure of catchpit with no surround or spigots